



Welcome, Introductions, Overview

Jail and Justice System Assessment

What is the National Institute of Corrections (NIC)?

- DOJ → BOP → NIC
- Divisions in Washington DC and Aurora, CO
- NIC Resources
 - Programs and training
 - Technical assistance to jurisdictions
- NIC Information Center
- NIC website: www.nicic.gov



What is a Jail and Justice System Assessment (JJSA)?

1. Considers all justice system components
2. Includes a jail / alternatives facilities tour
3. Provides an overview of justice system impacts on jail crowding
4. Promotes involvement of local officials and demonstrates common purpose
5. Introduces the idea of sustainable justice system practices



JJSA Goals

To help jurisdictions understand their justice system components, and to begin an inventory of their system.

To educate jurisdictions so they understand it is never just a “jail concern,” but it is in fact, a justice system concern and a ***community issue.***

To provide information about the facility development process.

To guide jurisdictions in a process to begin assessing their readiness for planning.

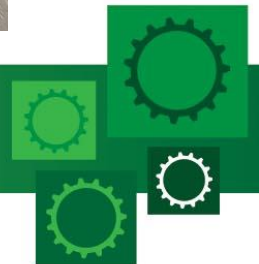




Jail Tour Observations

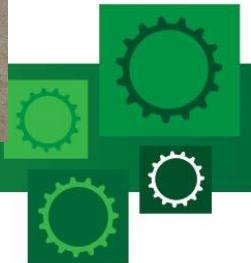
PROGRAMMING

Space repurposed
for religious services



- **STORAGE**

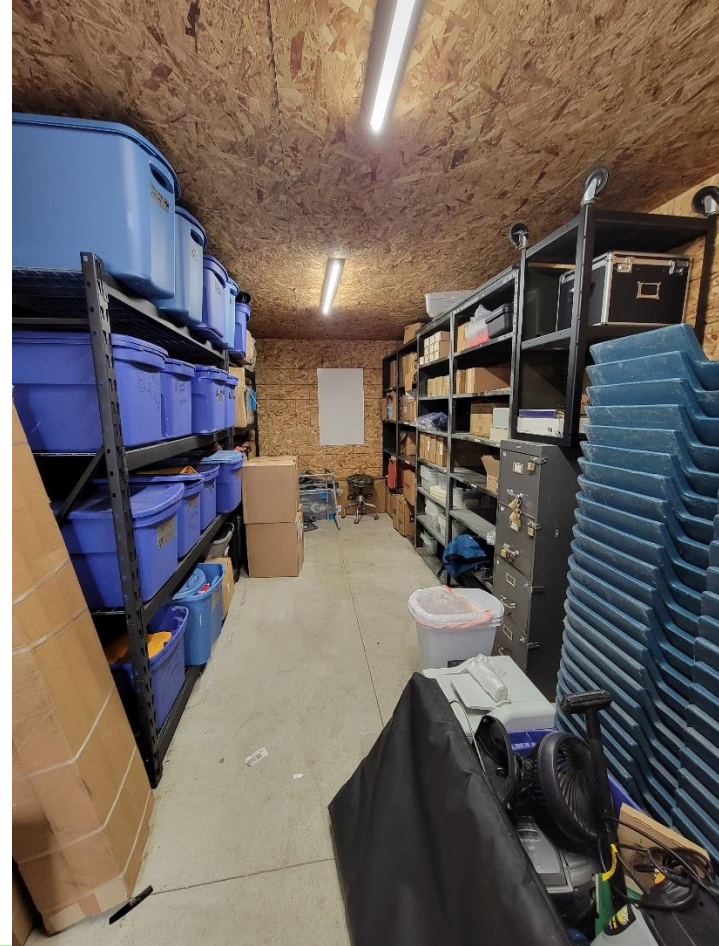
Sally Port



- **STORAGE:** Internal



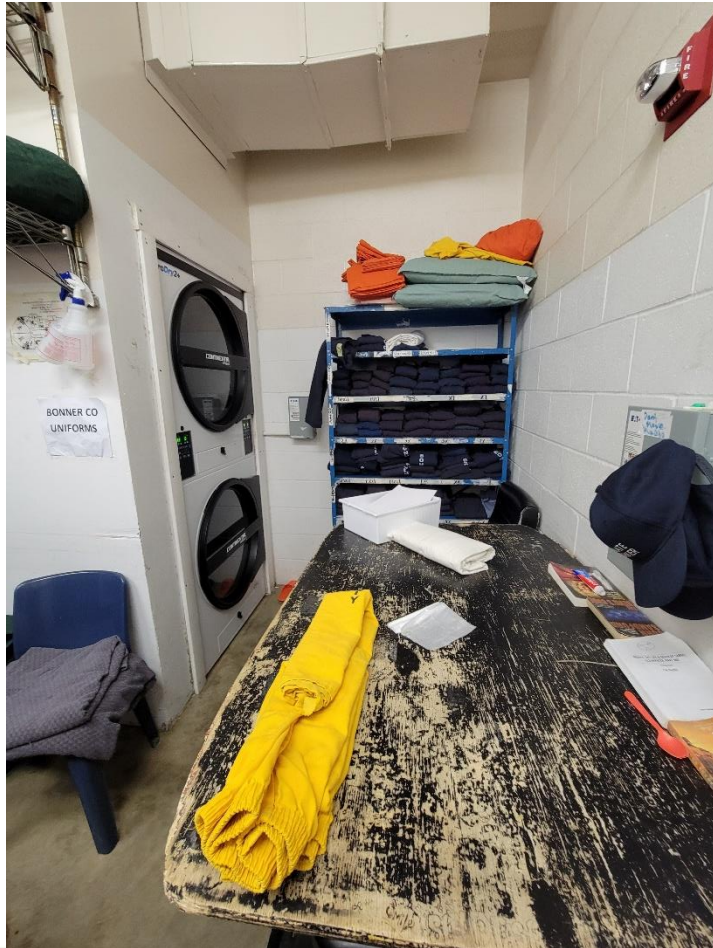
External



KITCHEN



INMATE LAUNDRY



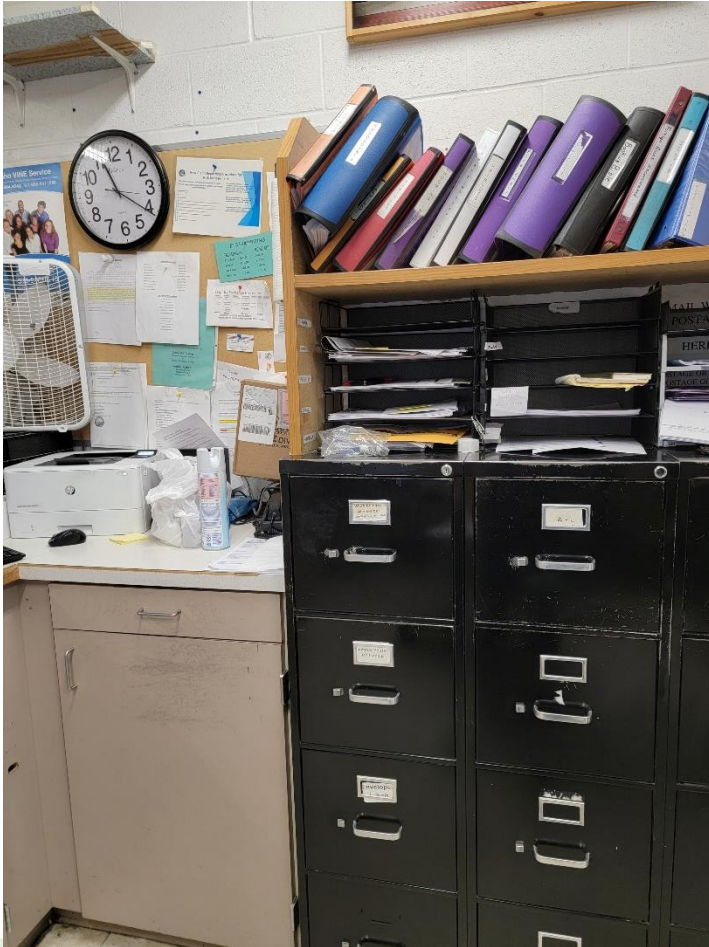
Medical Clinic



Medication Storage



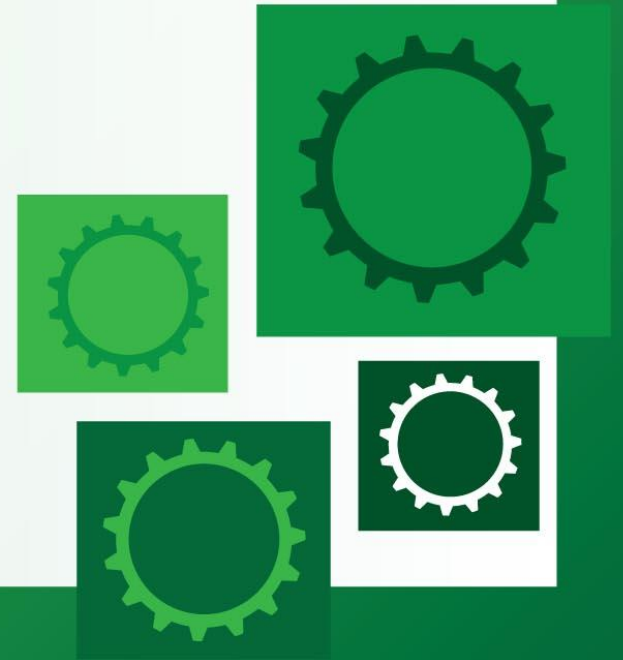
- **BOOKING/RELEASE**



- **CLASSIFICATION**

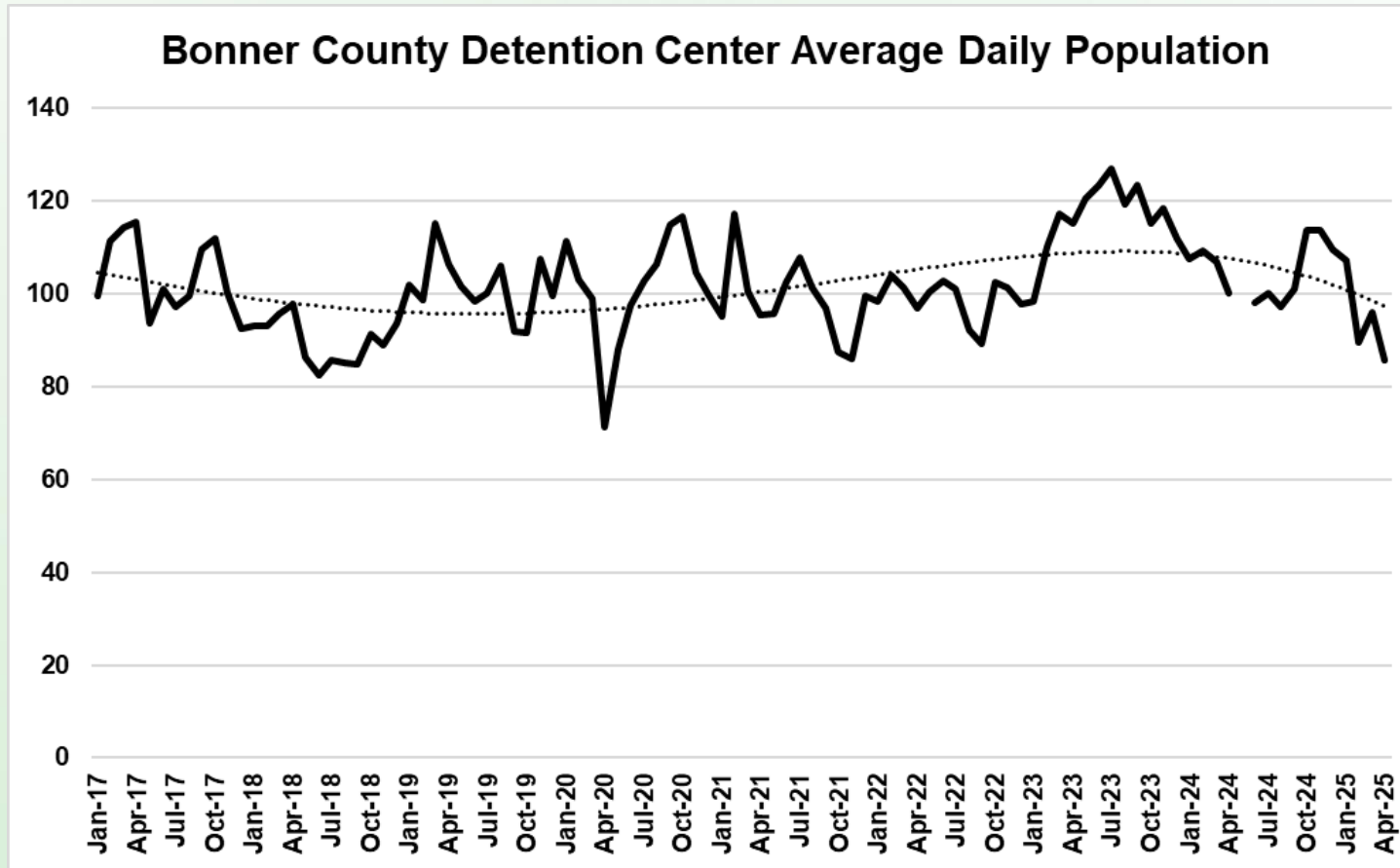


Jail Population Assessment

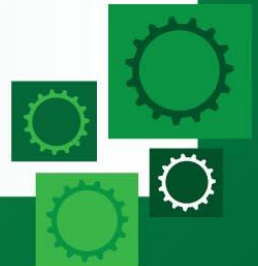


Jail Population Assessment

Detention Facility Average Daily Population

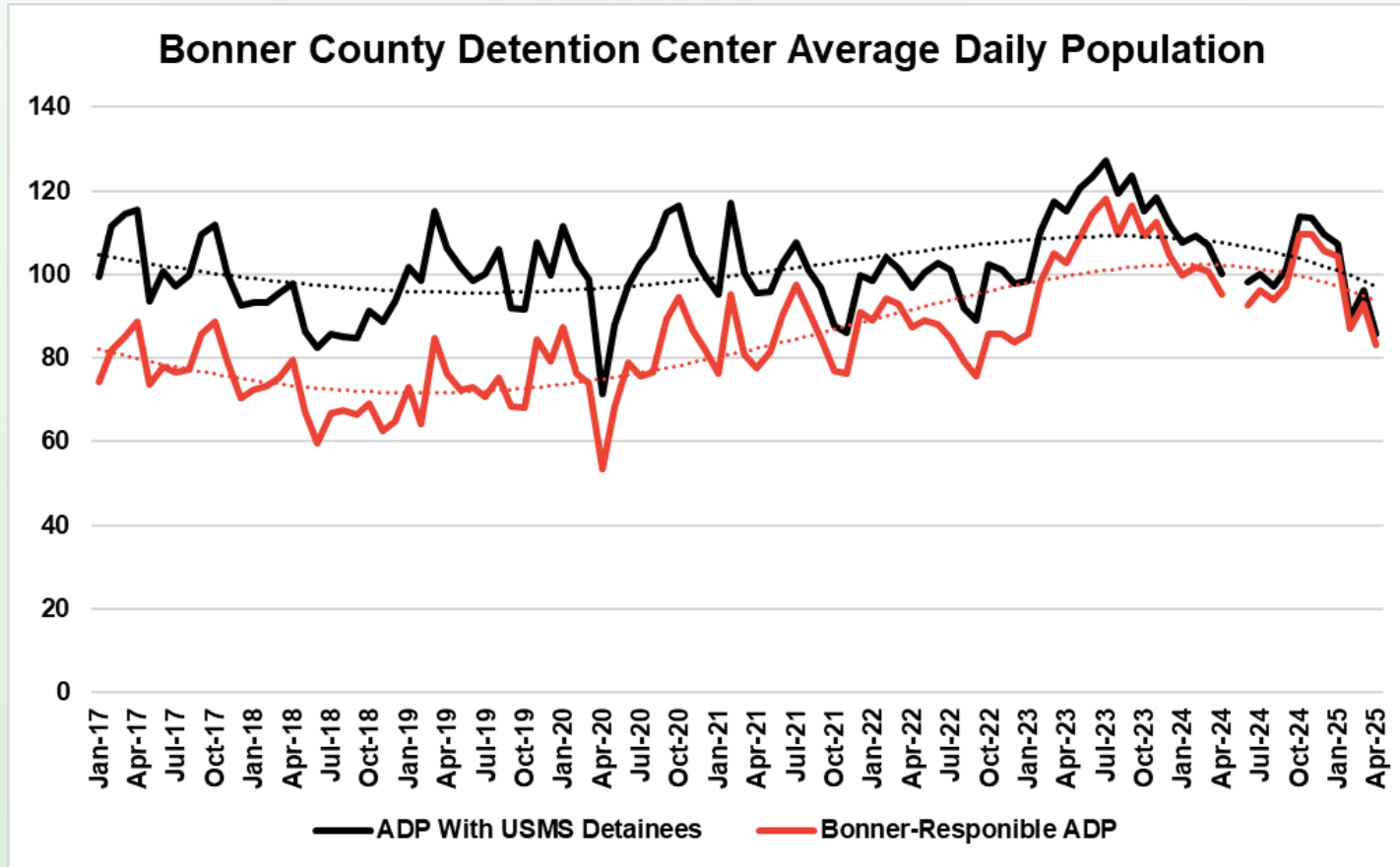


- ADP = Average Daily Population
- This graph includes US Marshal's Service detainees

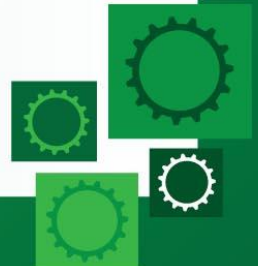


Jail Population Assessment

Detention Facility Average Daily Population



ADP is 7.5%
lower than same
period in 2024



Jail Population Assessment

All jail populations are driven by two factors:

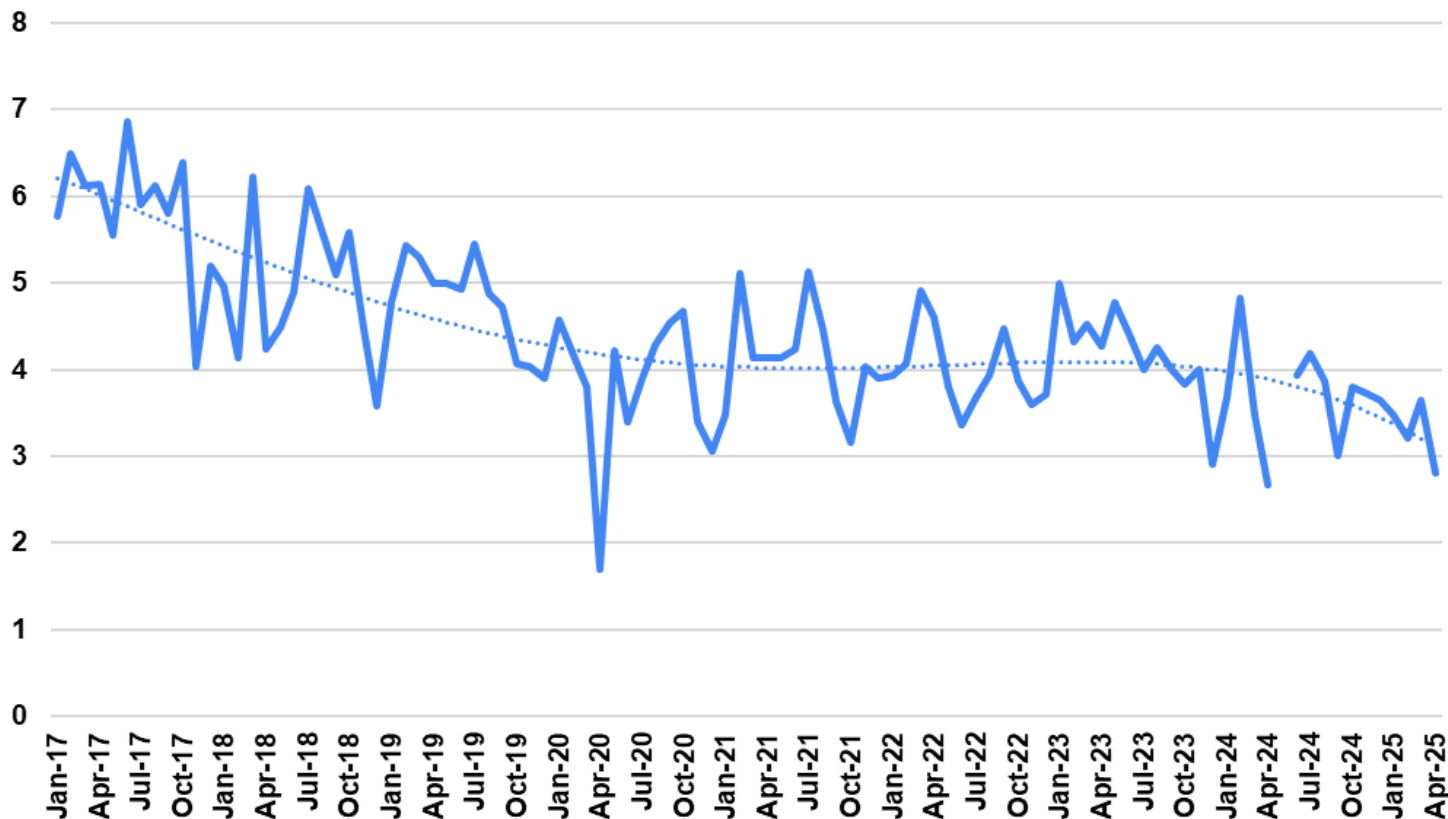
1. Bookings/Admissions
2. Average Length of Stay (ALOS)



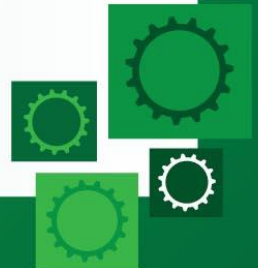
Jail Population Assessment

Factor 1: Detention Facility Bookings

Bonner County-Responsible Average Daily Bookings

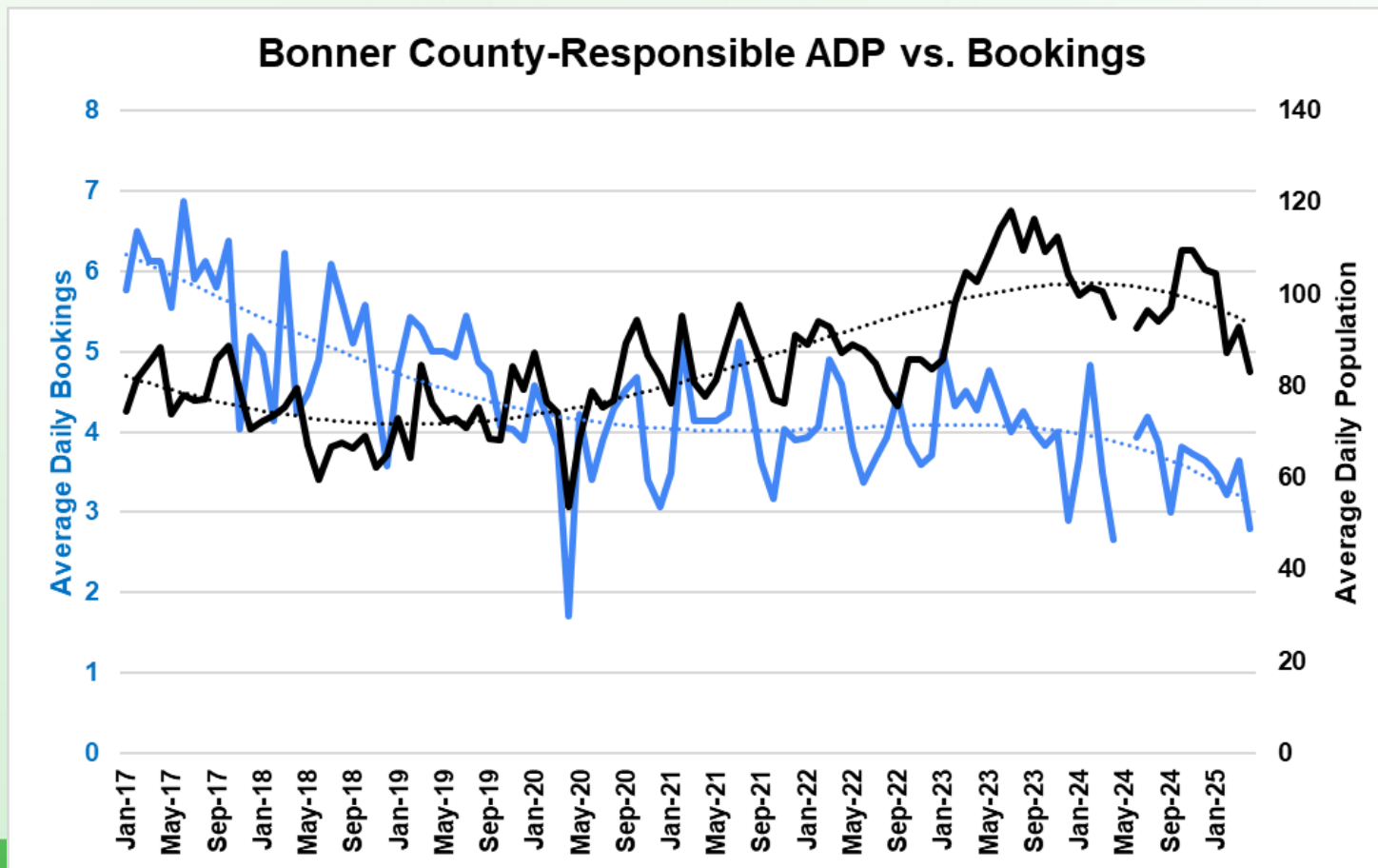


Bookings are
11% lower
than same
period in 2024

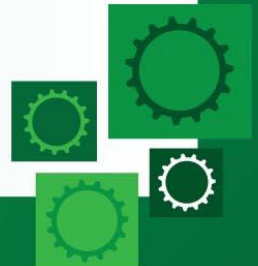


Jail Population Assessment

Factor 1: Detention Facility Bookings

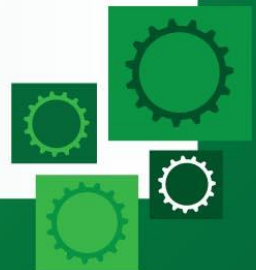
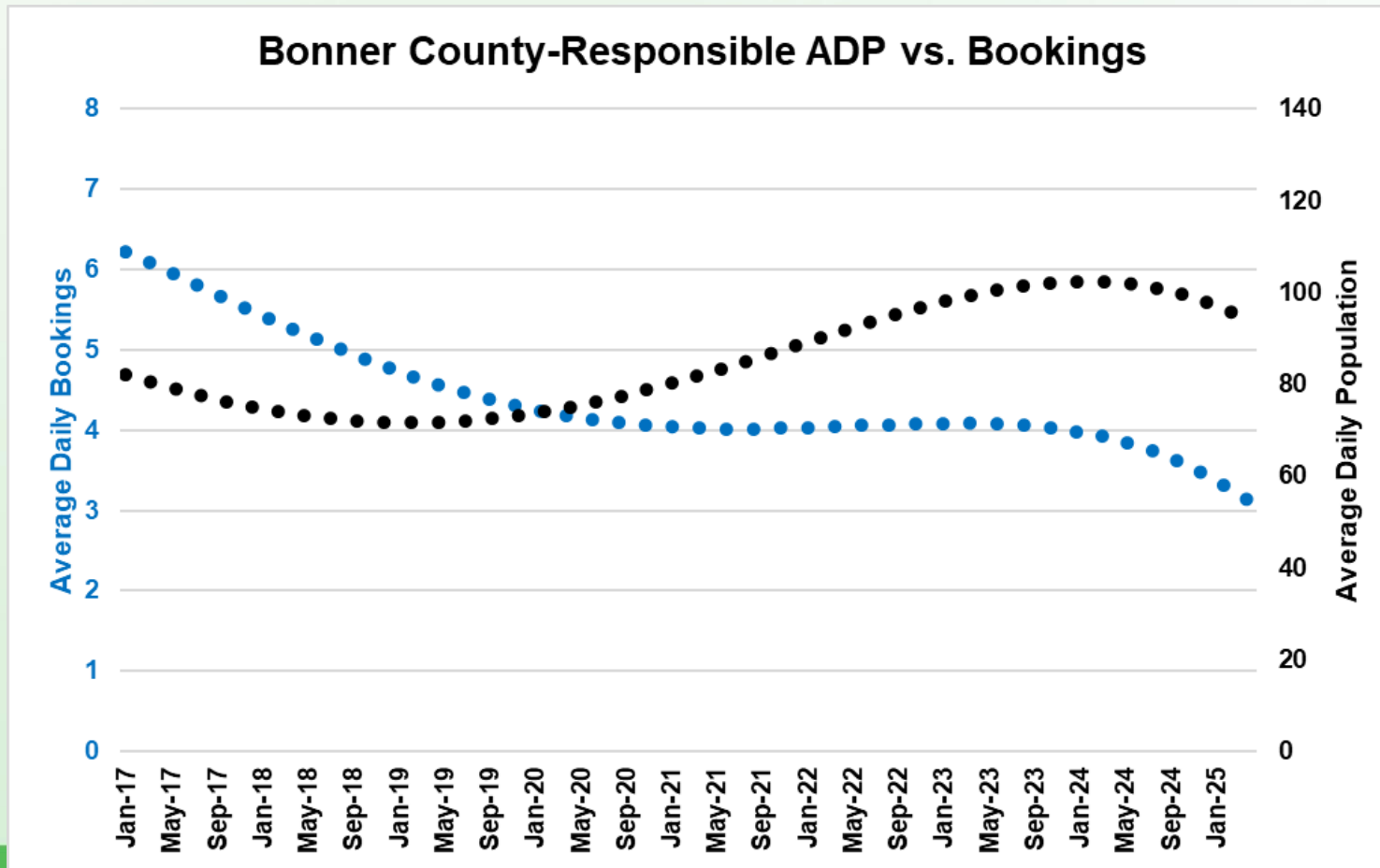


ADP increased in 2023 and 2024 despite bookings reduction



Jail Population Assessment

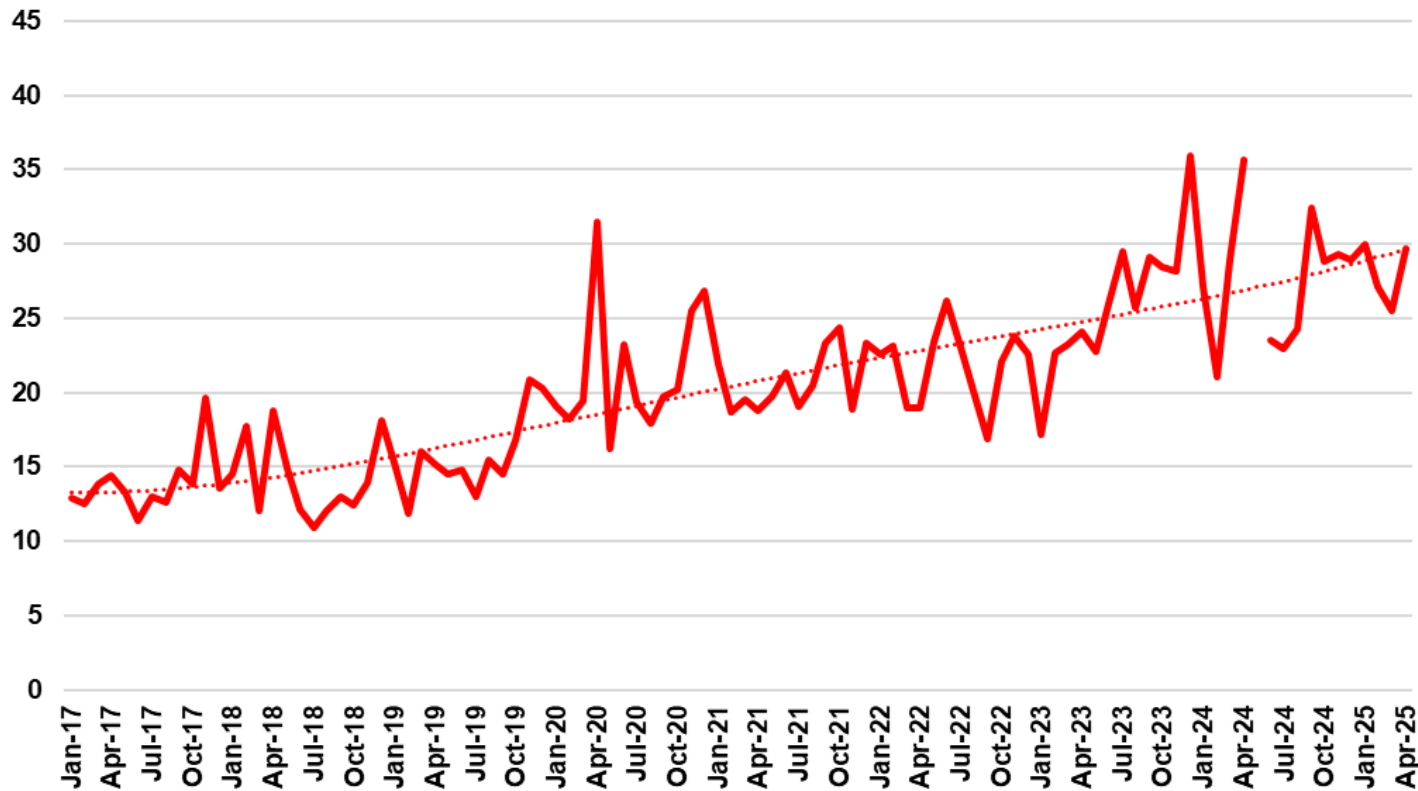
Factor 1: Detention Facility Bookings



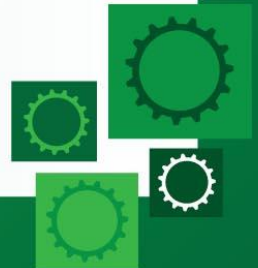
Jail Population Assessment

Factor 2: Average Length of Stay (ALOS)

Bonner County-Responsible Average Length of Stay

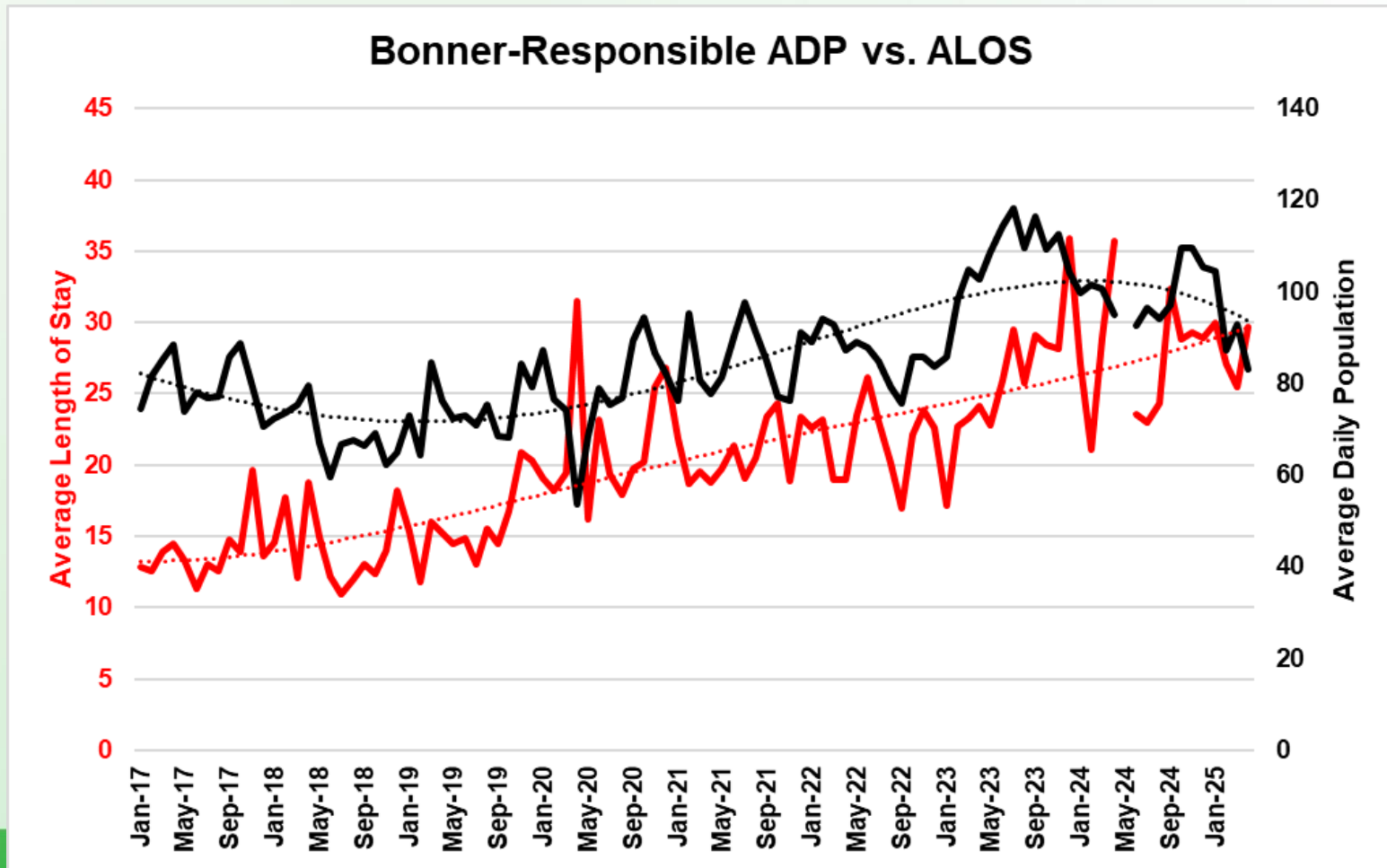


Year	ALOS
2017	13.8
2018	14.2
2019	15.7
2020	21.4
2021	20.8
2022	21.8
2023	26.1
2024	27.6
2025	28.1



Jail Population Assessment

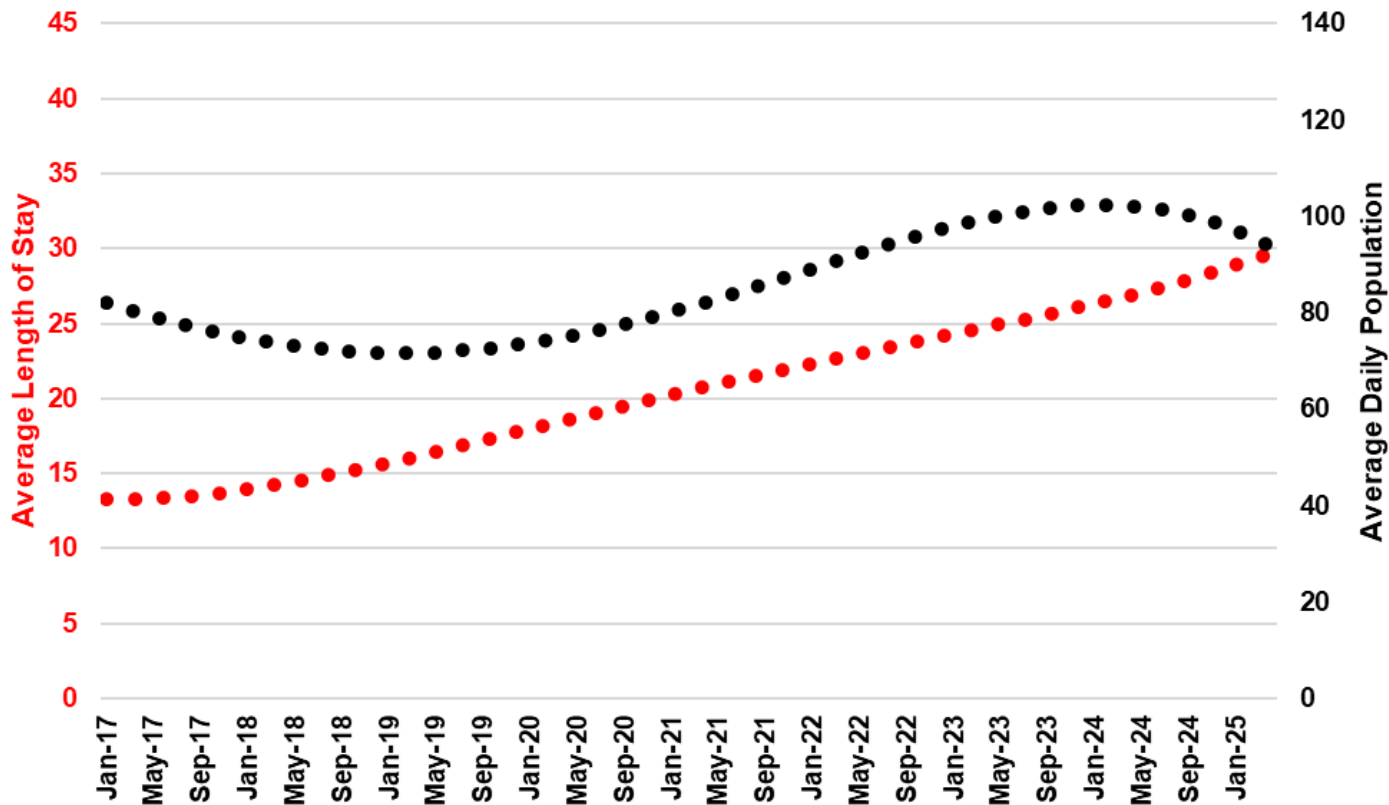
Factor 2: Average Length of Stay (ALOS)



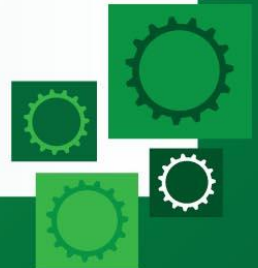
Jail Population Assessment

Factor 2: Average Length of Stay (ALOS)

Bonner-Responsible ADP vs. ALOS

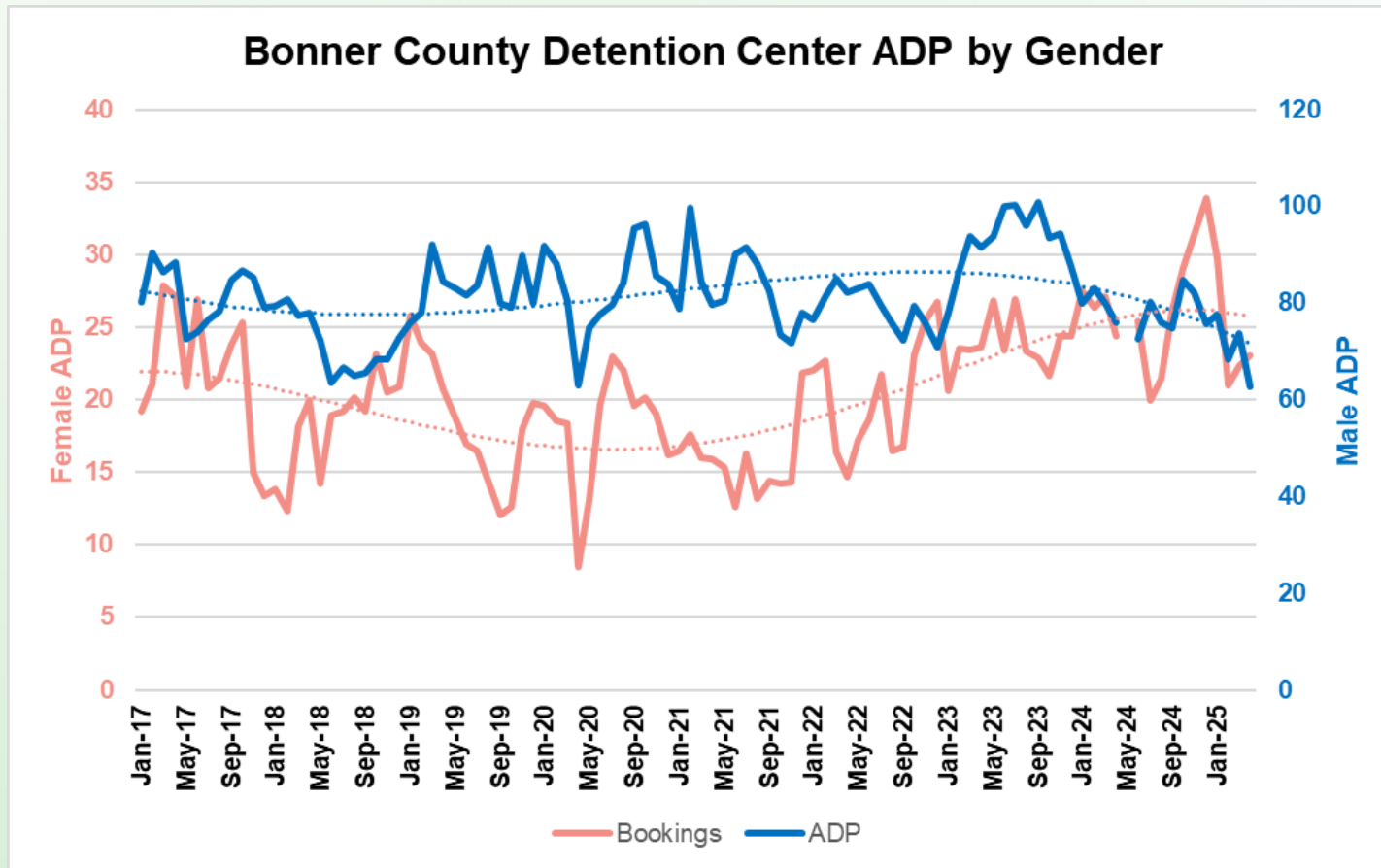


If ALOS in 2024 had been 21 days, the ADP would have been 78 instead of 100

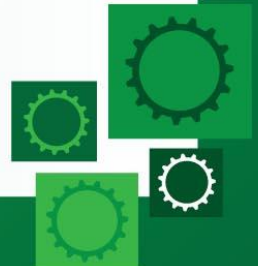


Jail Population Composition:

Population By Gender

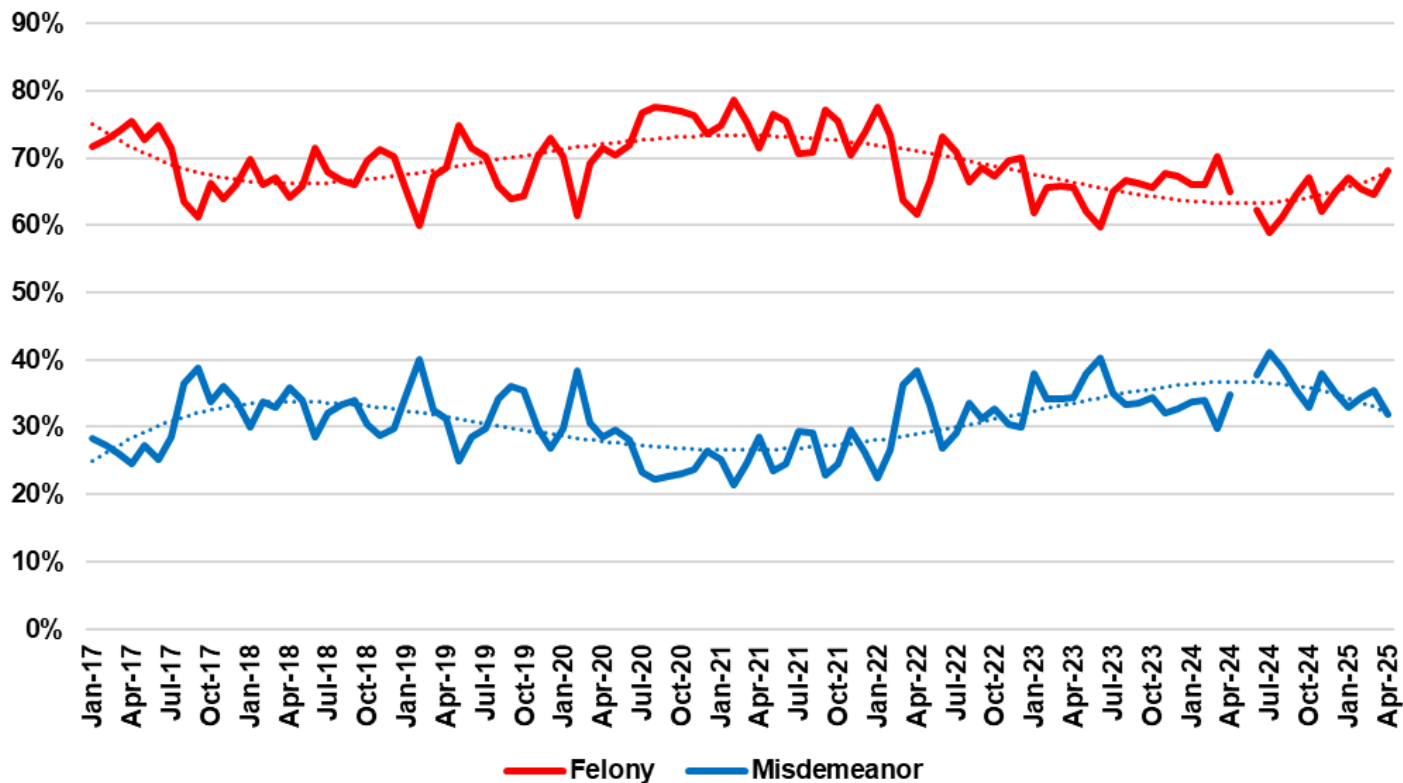


Female proportion is higher than expected (25%)

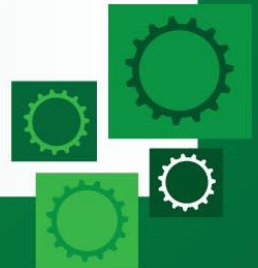


Jail Population Composition: Offense Level

Bonner-Responsible ADP By Offense Level



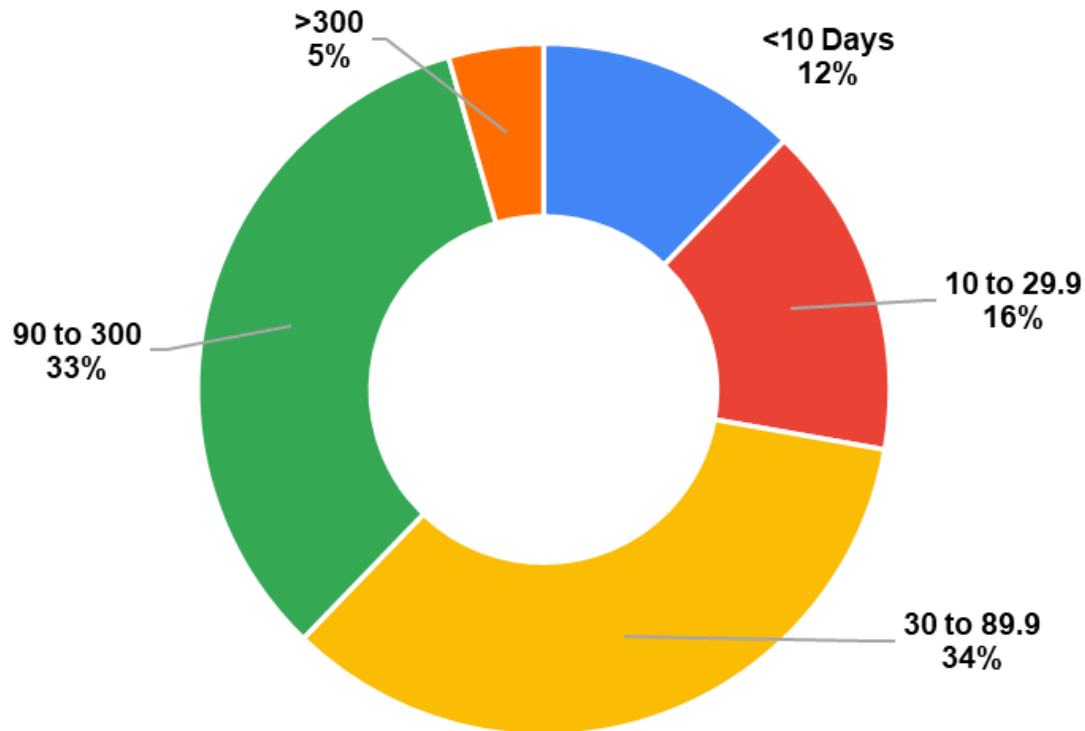
Misdemeanor proportion is higher than expected



Jail Population Composition:

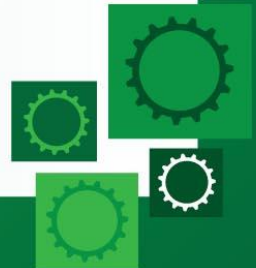
Length of Current Population Custody

Bonner County Detention Center Population
4pm, June 11, 2025



Jail Population Assessment Conclusions

1. The jail's population has been held in check due to a decrease in bookings, despite an increase in ALOS.
2. The jail holds a serious population containing high proportions of violent felons, sex offenders, and those awaiting IDOC beds, among others.
3. The increased ALOS may very well be due to the fact that the inmate charges have become more serious with time.
4. System could benefit from the dissemination of detailed population snapshots in addition to the lists that are currently distributed.
5. Long-term population outlook – the best way to predict the future is to create it.



The background features a large, stylized graphic of three concentric green curved lines that sweep from the top left towards the right. In the lower right quadrant, there are three interlocking gears of different sizes, all in shades of green. The largest gear is positioned at the bottom right, with two smaller gears meshing with it from the left and bottom-left.

Next Steps

Jail and Justice System Assessment

Programs and Technical Assistance

Planning of New Institutions (PONI)

- When entering or just beginning needs assessment
- Team required, taught at NIC Academy

Criminal Justice Coordinating Council

How to Open a New Institution (HONI)

- At least 18 months before opening
- Team required, taught on-site



A decorative graphic featuring several thick, curved green lines that sweep across the top and right side of the slide. In the bottom right corner, there are three interlocking gears of different sizes, also in shades of green.

Thank You!

*Jail and Justice System
Assessment*